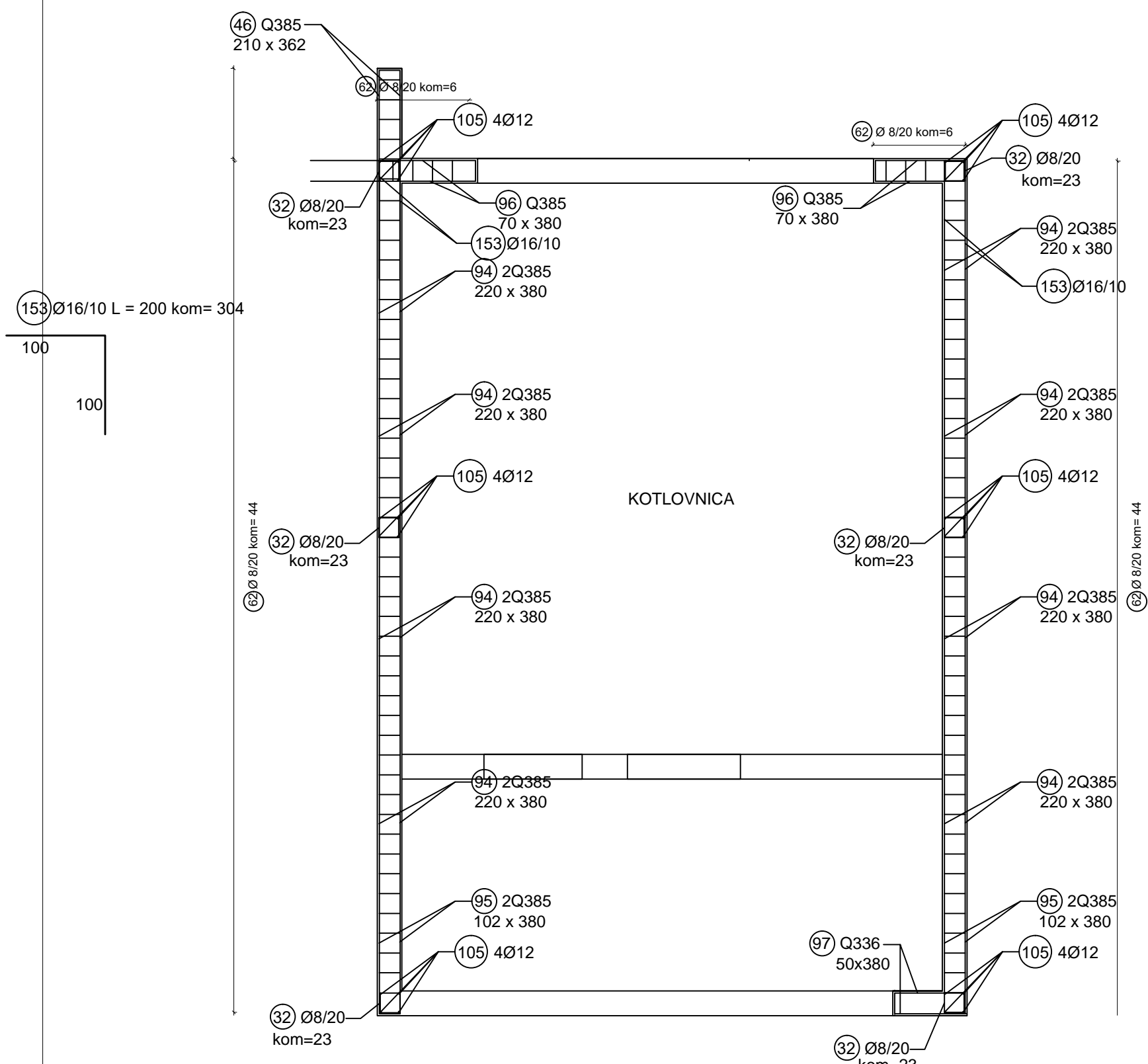
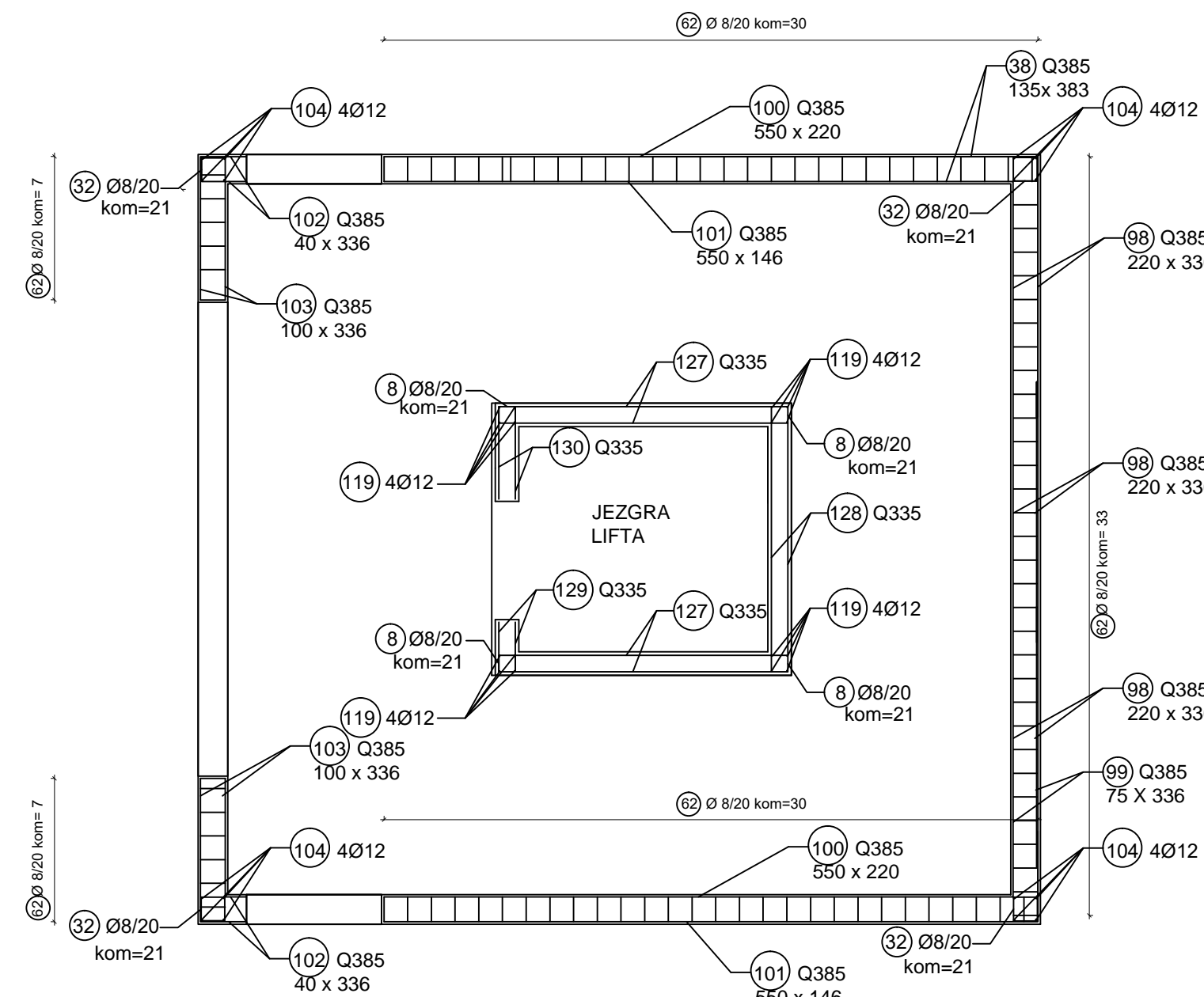


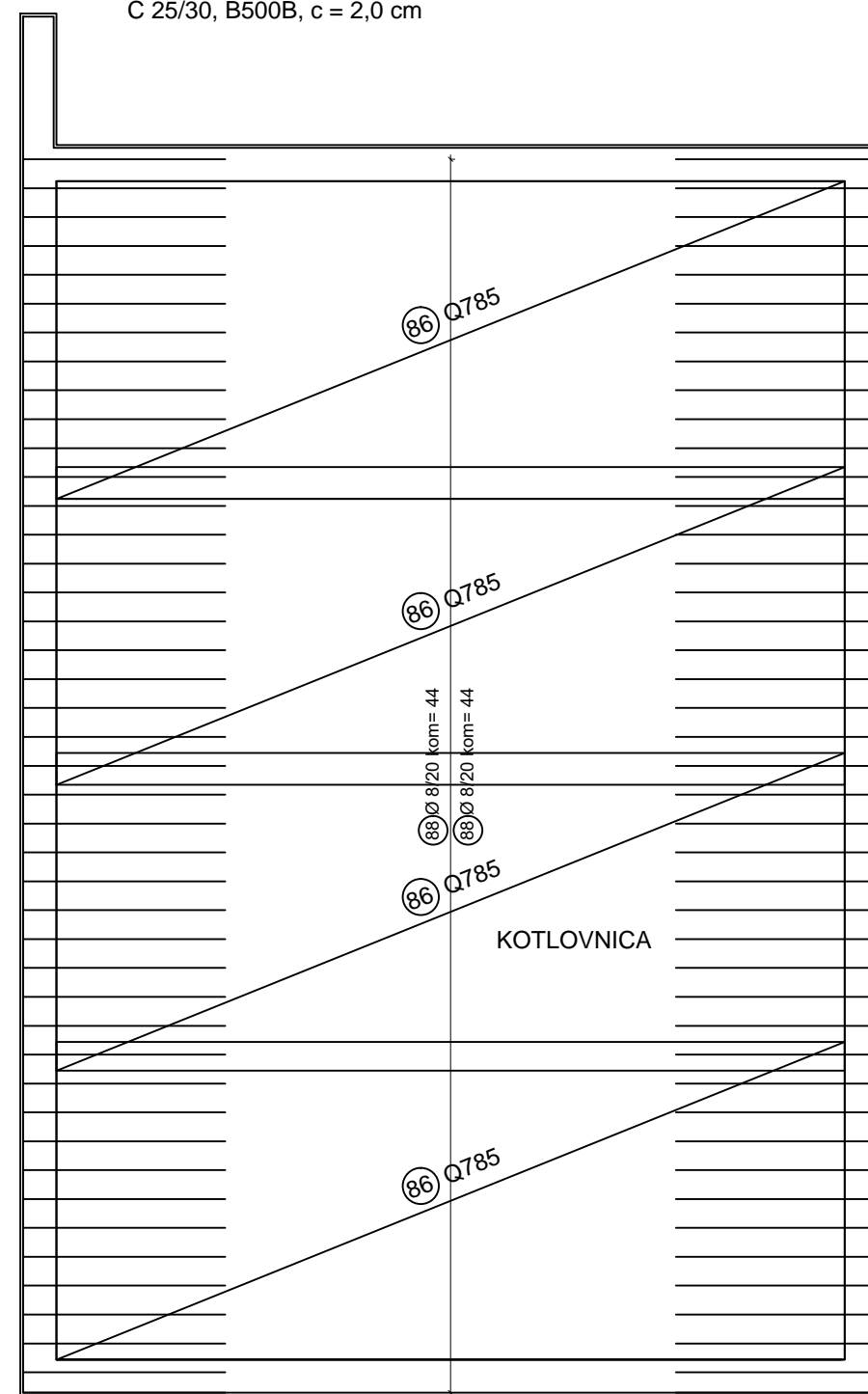
tlort armiranobetonskih zidova prizemlja
C 25/30, B500B, c = 2.0 cm



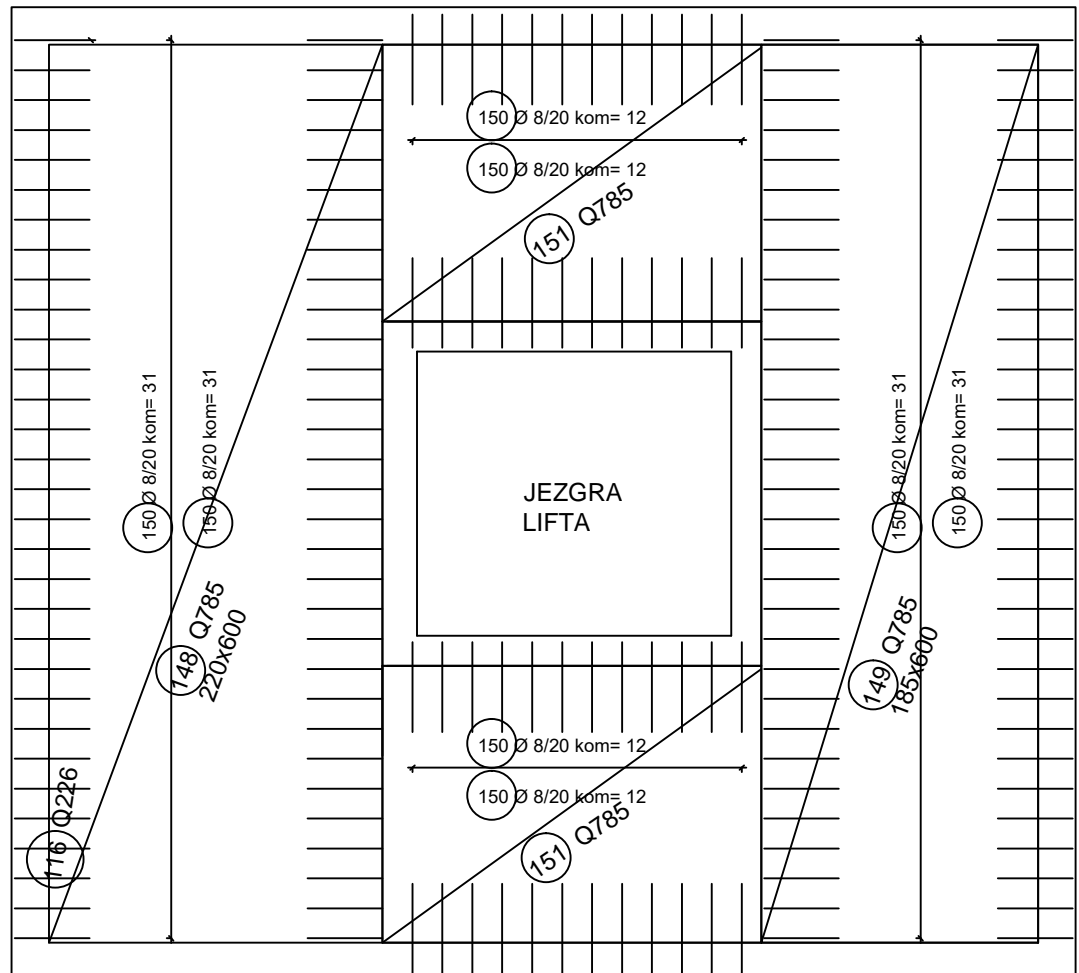
tlort armiranobetonskih zidova prizemlja
C 25/30, B500B, c = 2.0 cm



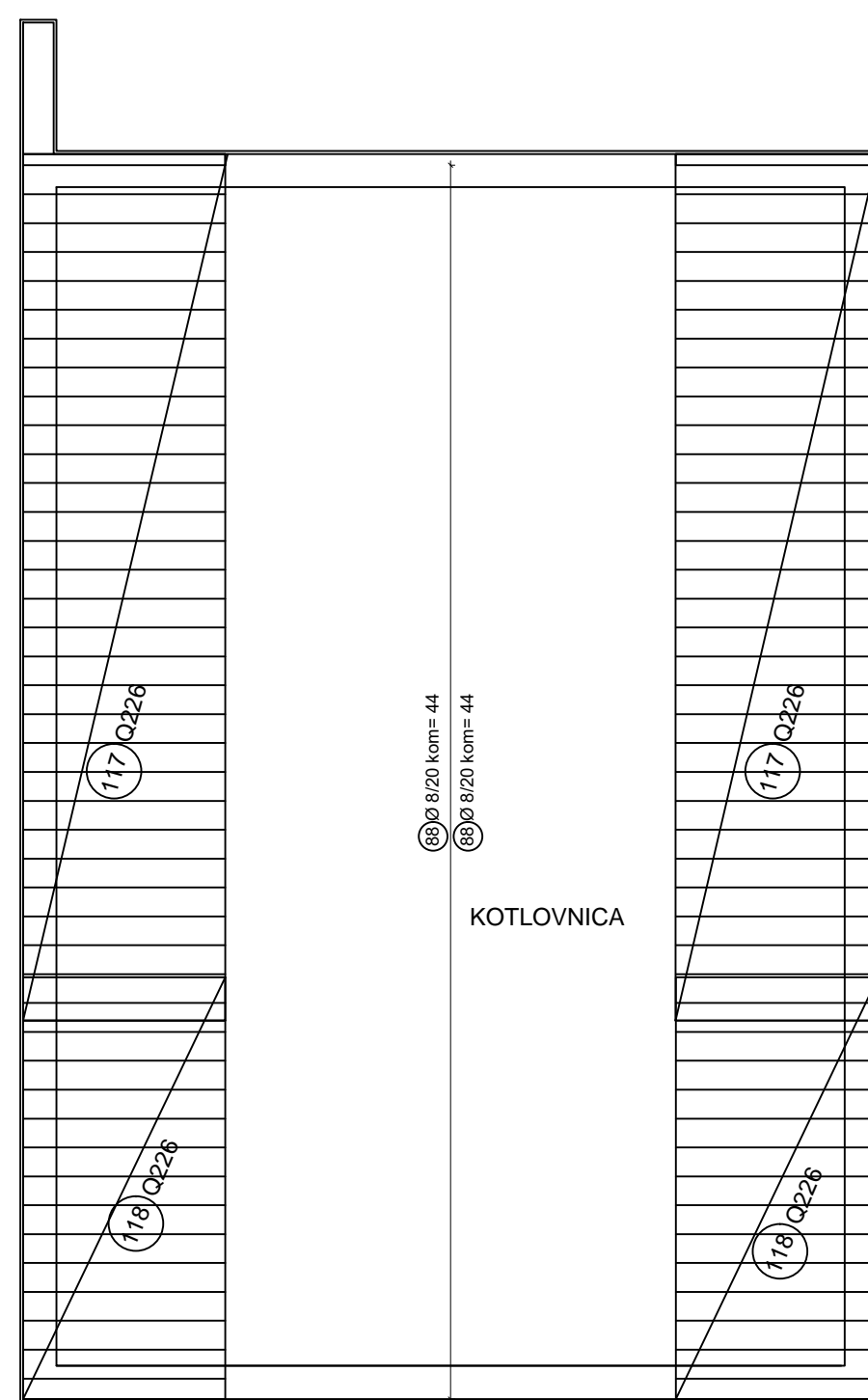
tlort armiranobetonske ploče iznad kotlovnice
h = 20 cm
dolja zona
C 25/30, B500B, c = 2.0 cm



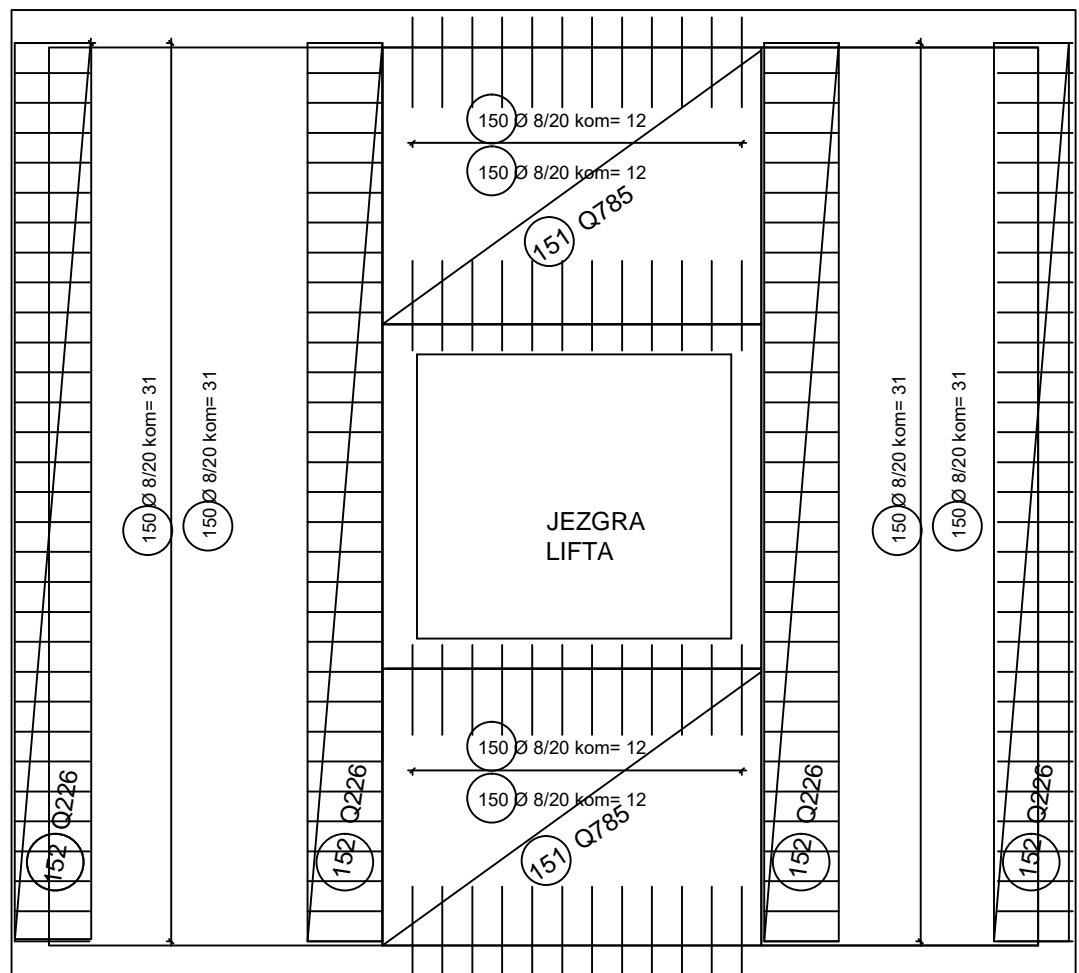
tlort armiranobetonske ploče iznad jezgre
slablišta h = 20 cm
dolja zona
C 25/30, B500B, c = 2.0 cm



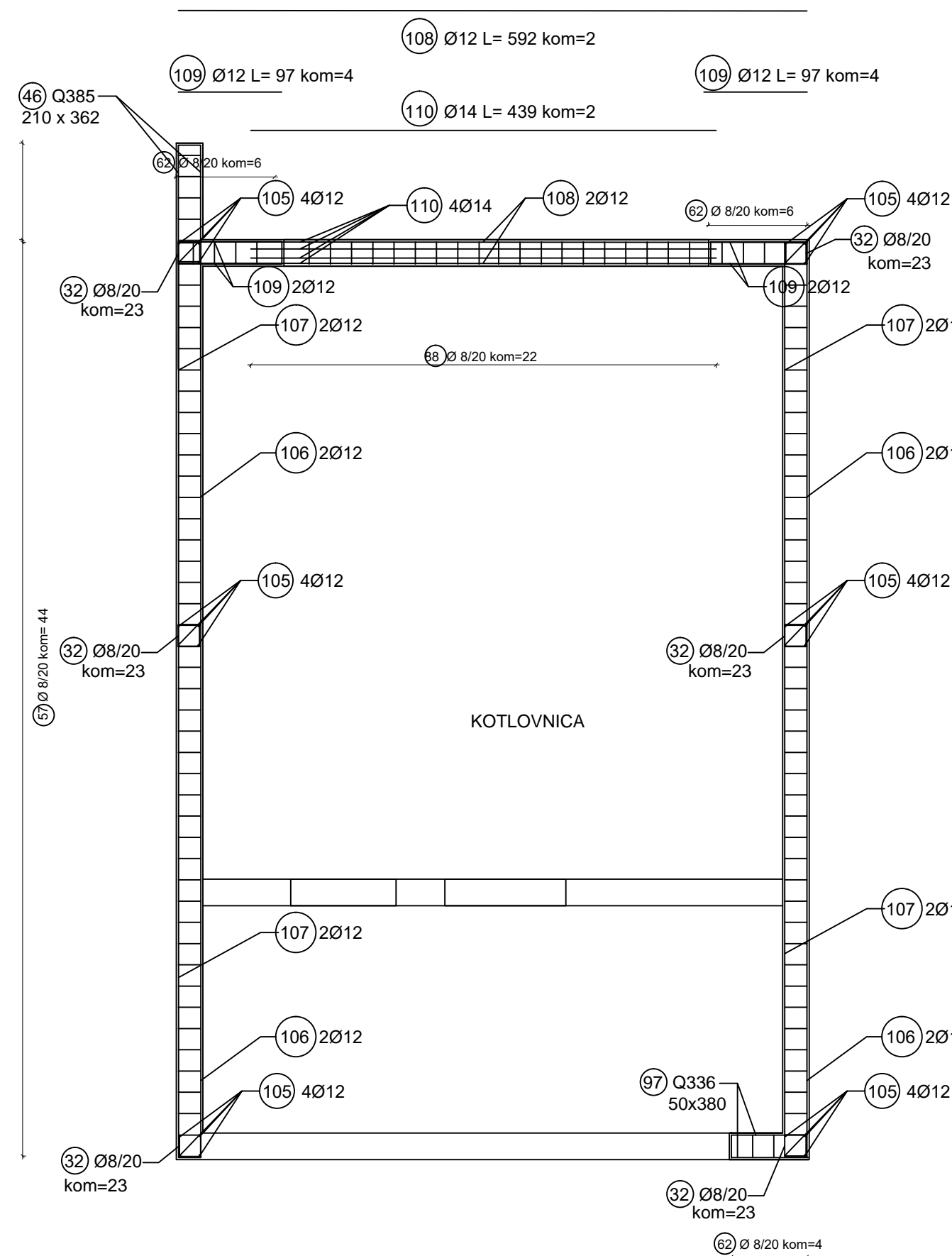
tlort armiranobetonske ploče iznad kotlovnice
h = 20 cm
gornja zona
C 25/30, B500B, c = 2.0 cm



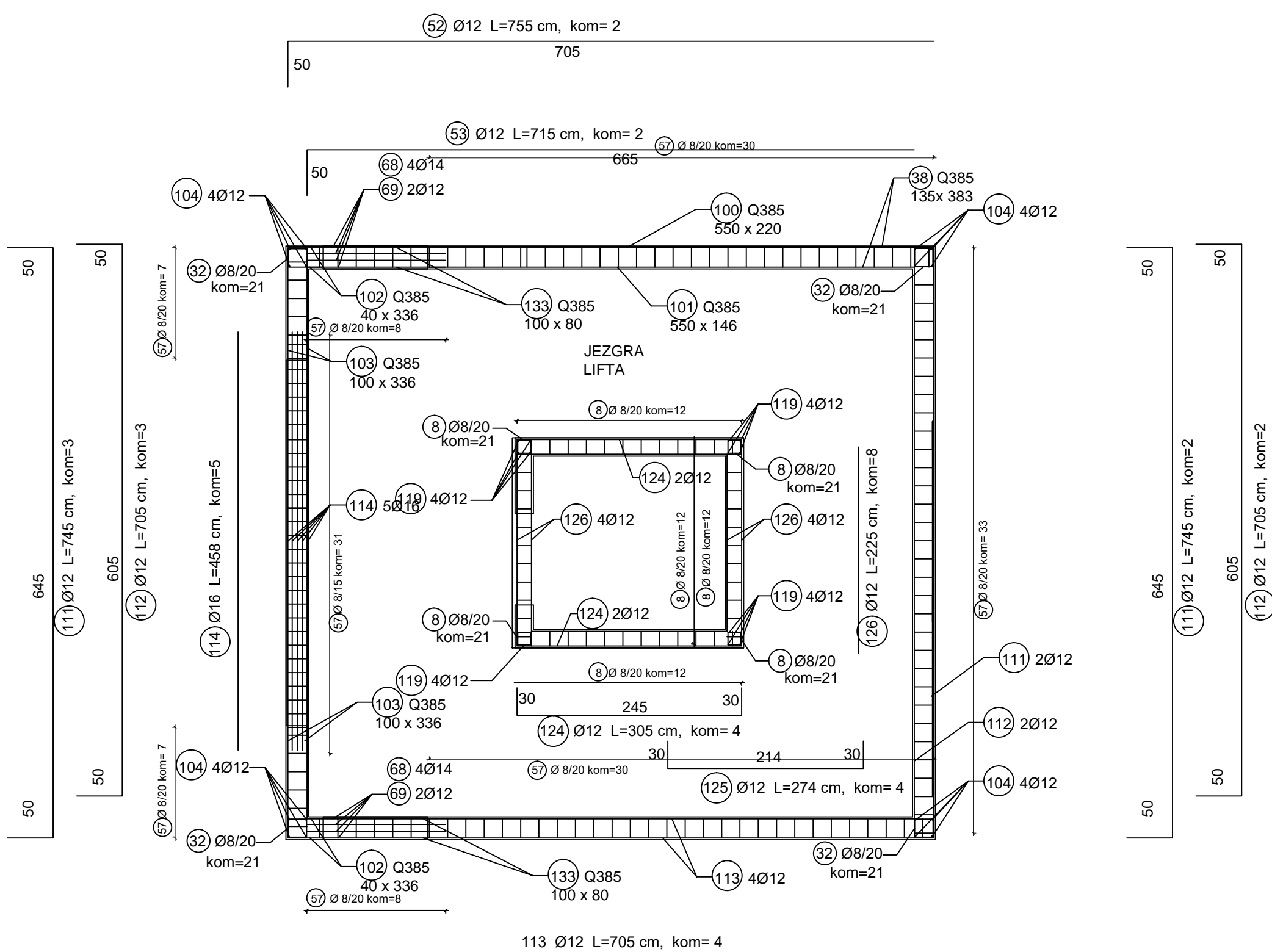
tlort armiranobetonske ploče iznad jezgre
slablišta h = 20 cm
gornja zona
C 25/30, B500B, c = 2.0 cm



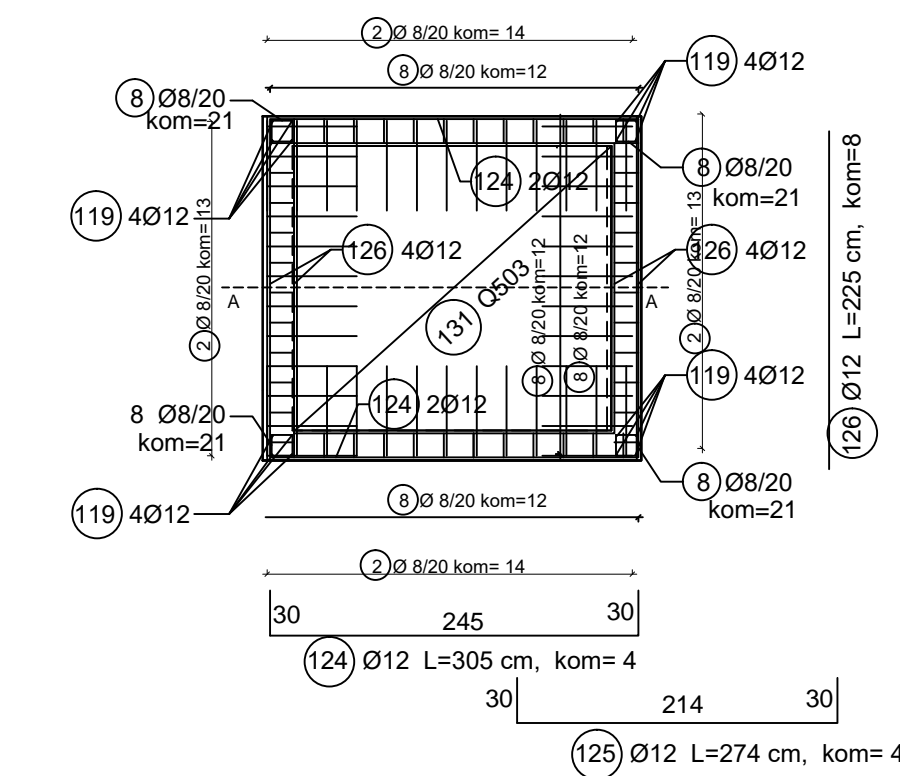
tlort armiranobetonskih nadvoja i serklaža
iznad prizemlja



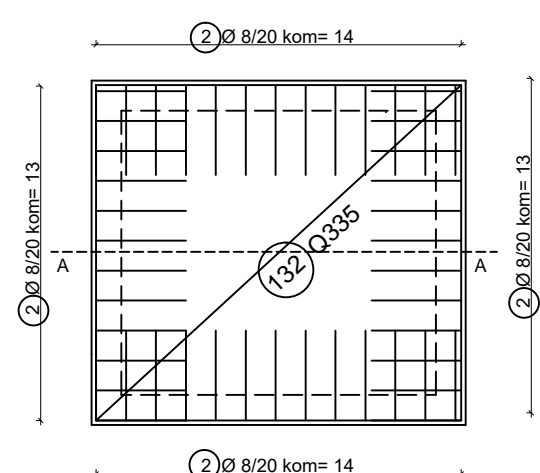
tlort armiranobetonskih nadvoja i serklaža
iznad prizemlja



tlort armiranobetonske ploče jezgre lifta
dolja zona
C 25/30, B500B, c = 2.0 cm



tlort armiranobetonske ploče jezgre lifta
gornja zona
C 25/30, B500B, c = 2.0 cm



visina konstrukcije ploče kotlovnice 20 cm, ploče jezgre 20 cm
kvaliteta betona C25/30
kvaliteta ožika B500B
zaštita ožika betona c=2.0 cm
preklapanje rebarne i mrežaste armature minimumo 30 cm

Relativna kuta ±0.00 m odgovara
apodručju kot ±0.75 mm

0 1 2 3 4 5m

M1 1:50

TLOORT PLOŠA KOTLOVNICE I
JEZGRE LIFTA IZNAD KATA